

Template for the abstract

First A. Author[†] and Second S. Author[†]

[†] *Leibniz-Institut für Werkstofforientierte Technologien - IWT,
Bremen, Germany, thw@iwt.uni-bremen.de*

[†] *Physikalisch-Technische Bundesanstalt (PTB), Berlin, Germany,
Jonas.Gienger@ptb.de*

This is the template for the abstract. TeXWorks works fine with the template. Please make sure that your document compiles properly and that it only uses easily available, standard L^AT_EX packages.

Avoid non-standard abbreviations in the text. You may include figures (see Figure 1) and a short bibliography (see [1]), as long as you do not have more than ten pages.

If applicable, list your special L^AT_EX macros (such as `\newcommand` statements) in a separate file named "macros.tex". Please send your abstract to one of the e-mail addresses below. A book of abstracts, as well as the final programme, will be available for download at the workshop web page before March 1 2024.

References

- [1] Alberto P. Calderón, *On an inverse boundary value problem*, Comput. Appl. Math. **25** (2006), no. 2-3, 133–138.

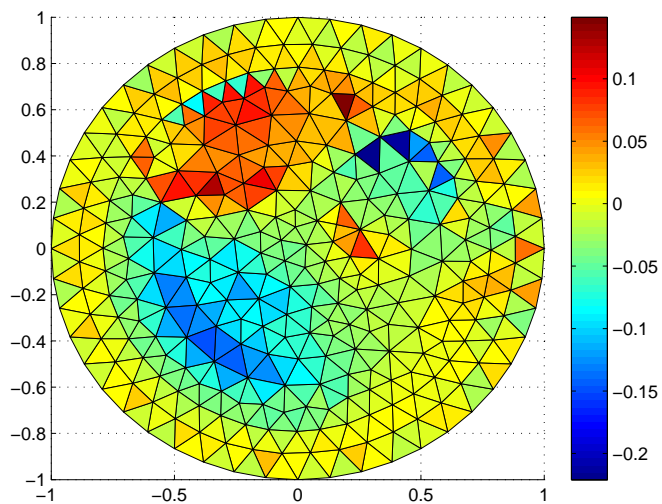


Figure 1: Numerical reconstruction of an inclusion.